

EliteModels

28in Sukhoi Su-27 Kit



Specifications

Wingspan: 28.4in (720mm)

Length: 40.1in (1020mm)

Flying Weight: 21oz (600g)

Dear Customer,

Congratulations on your purchase of the **Sukhoi Su-27 Kit** from Value Hobby. We thank you for your generous support, and hope you enjoy your new airplane.

At Value Hobby, we hope to offer competitive prices, good performance, and products that you can setup and use with ease. That's why we extensively researched and tested this airplane, and suggested all the products necessary for you to setup properly. We understand that you have many choices when purchasing, and we are grateful you choose to buy from us.

As vendors, one of the most gratifying things for us is to hear from our customers. We would welcome any suggestion to help us improve. Please make us aware of any errors and imperfections in the airplane or the instructions, or about the setup that we suggested. We hope you'll find our setup suggestions to be helpful, and enjoy flying your new airplane. Please feel free to contact us at (630) 948-0947 or email us at support@valuehobby.com

Disclaimer

By purchasing and/or building this model, user assumes ALL liability and risk involved with this product. This model should be built and flown by an experienced pilot and only flown at AMA sanctioned sites.

Value Hobby guarantees this model to be free of defects in materials and workmanship at the date of purchase. This warranty does not cover any parts damaged by use or modifications. In no way shall Value Hobby's liability exceed the original cost of the purchased model. Further, Value Hobby reserves the right to modify this warranty without notice. Value Hobby has no control over the final stages of assembly or the material used for the final assembly. No liability shall be assumed nor materials used for the final user-assembled product. By the act of using the final product the user accepts all resulting liability. Value Hobby, as a R/C product vendor, provides a top-quality airplane and instructions to complete the model. The quality and flight characteristics of the finished model depend greatly on how it is built; we cannot guarantee the performance for the completed model and representations are expressed or implied as to the performance of the completed model. If the buyer is not prepared to accept the liability associated with the use of this product, the buyer is advised to return this kit immediately, in new and unused condition.

Safety in Assembly

During assembly of this airplane, you will be asked to use sharp knives and hobby adhesives. Please follow all safety procedures recommended by the manufacturers of the products you use, and always follow these important guidelines: ALWAYS protect your eyes when working with adhesives, knives, or tools, especially power tools. Safety glasses are the best way to protect your eyes. ALWAYS protect your body, especially your hands and fingers when using adhesives, knives, or tools, especially power tools. Do not cut toward exposed skin with hobby knives. Do not place hobby knives on tables or benches where they can roll off or be knocked off. ALWAYS have a first-aid kit handy when working with adhesives, knives, or tools, especially power tools. ALWAYS keep hobby equipment and supplies out of the reach of children.

Safety in Flying

This is NOT a toy! It is a very high-performance RC airplane capable of high speeds and extreme maneuvers. It should only be operated by a competent pilot in a safe area with proper supervision. ONLY fly your airplane in a safe, open area, away from spectators and vehicles—and where it is legal to fly. NEVER fly over an unsafe area, such as a road or street. Never fly too close to yourself or spectators.

Never run your motor inside a house or building with the propeller attached – Remove the prop for safety.

Required Items

Foam Safe Glue

Hobby Knife

Small Phillips Screwdriver

Set Metric Allen Wrenches

Scissors

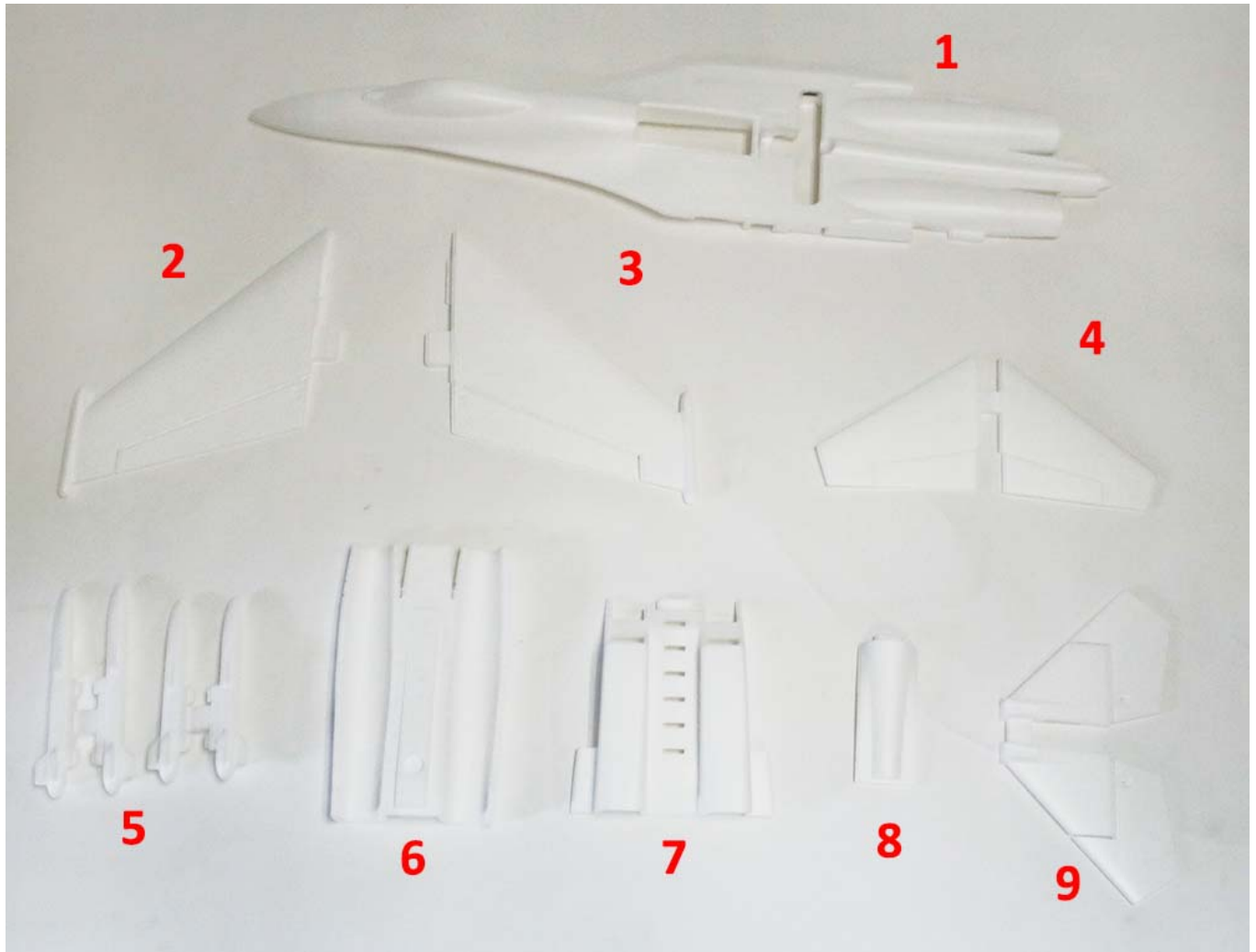
Small Pliers

Wire Cutters

Before Starting Assembly

Unpack your airplane and examine the components. Check for damage of any kind. If you see any damage, please contact Value Hobby immediately.

Airframe Parts



1. Fuselage
2. Left wing
3. Right wing
4. Vertical fin
5. Missile foam
6. Exhaust part
7. Air intake part
8. Battery cover
9. Elevator

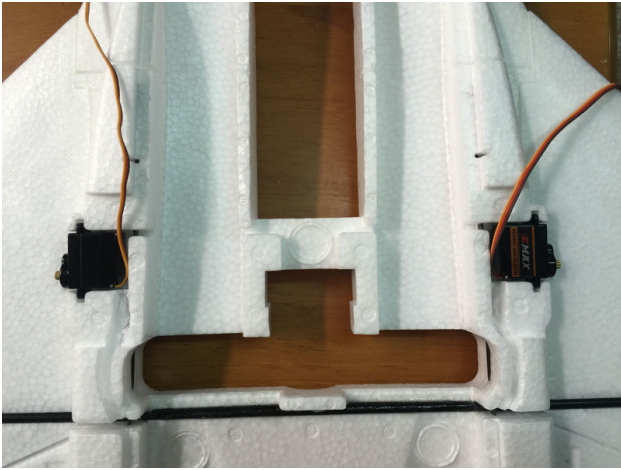


- 10. Z-bend wire
- 11. Foam safe glue
- 12. Motor mounting bracket
- 13. Control horn
- 14. Carbon fiber rod
- 15. Small part bag
- 16. Magnet
- 17. Small Philips screwdriver

RECOMMENDED EQUIPMENT

Product	SKU	Quantity
Towerpro SG90 Servo	TWP-SV-5057	2
GForce E400 Motor (2212-2200KV)	VHB-MT-5337	1
GForce 30A Brushless ESC	VHB-SC-5535	1
GForce Elite Series 2200mAh 3S LiPO	FLM-LP-1874	1
Gemfan 6 x 4 Prop	GFH-MP-2069	1

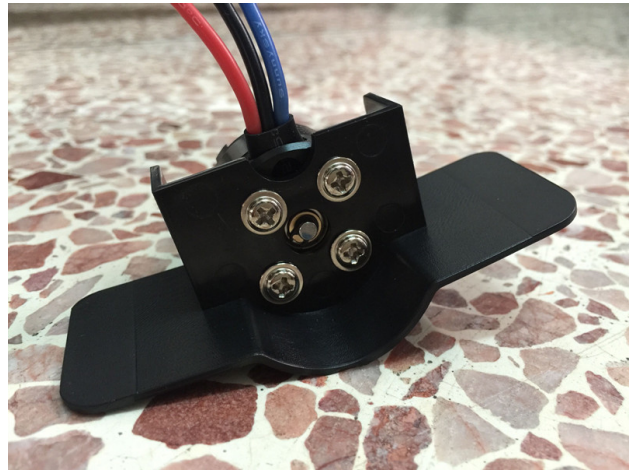
Locate two servos (not included). Install them into the pre-cut slot of fuselage. Please note the arm of servo should point toward the tail.



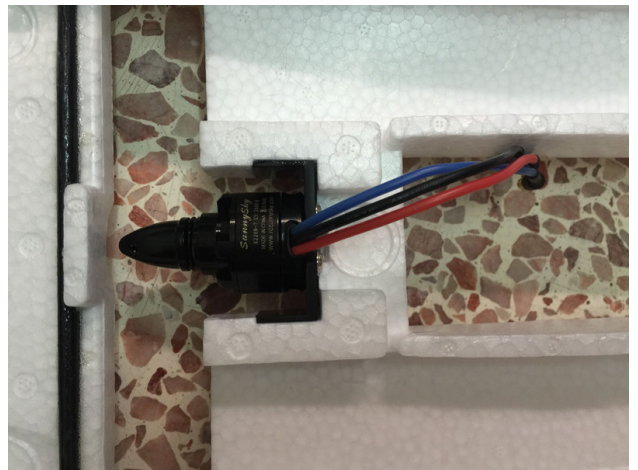
Install a 30A ESC into the fuselage. Then connect the servos and the ESC to your receiver.



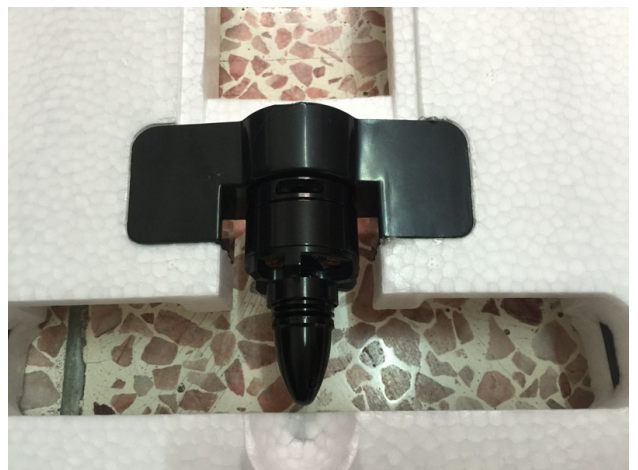
Locate a 2212 brushless motor (not included). Secure it on the motor mounting bracket with 4 screws.



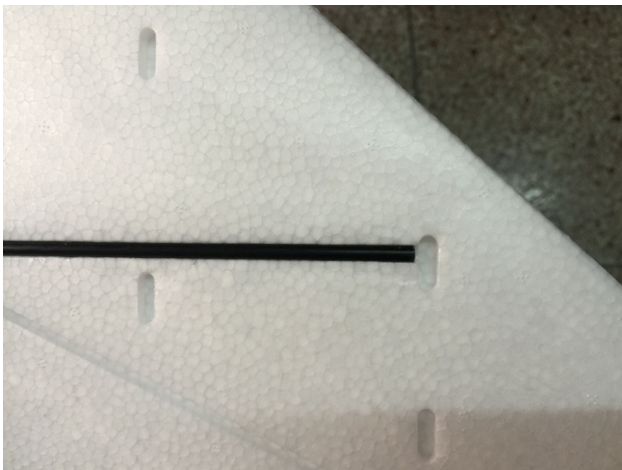
Install the motor mounting bracket on the fuselage.



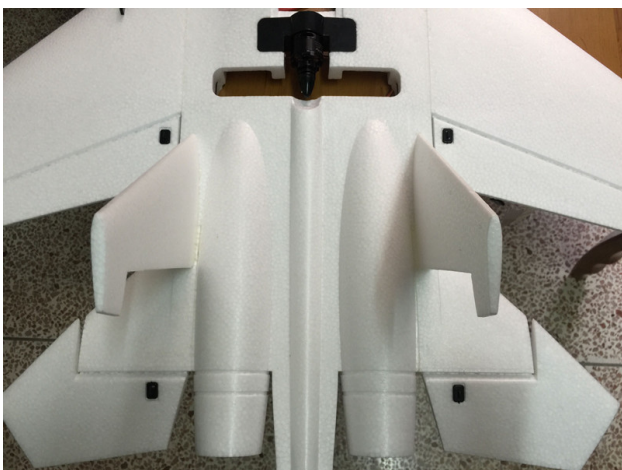
Connect the motor to the ESC.



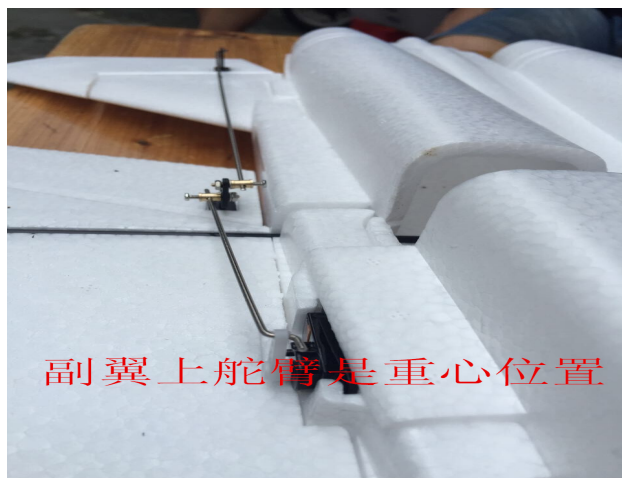
Insert the carbon fiber rod into the pre-cut slot on the wing.



Secure four control horns on the control surfaces.



Install the adjuster on the control horn. Then connect Z-bend wire to the adjuster.



Secure the 6x4 propeller on the motor. Connect your ESC and LiPO battery and secure them in the battery compartment.

The CG should be approx. 26in from the head of airplane.

